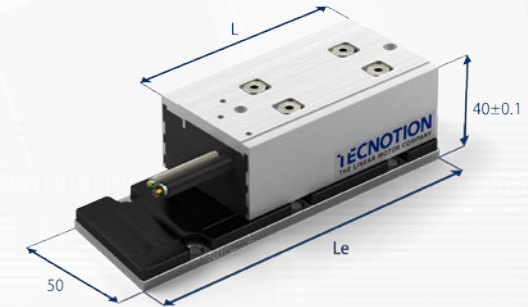


	Parameter	Remarks	Symbol	Unit	TM3	TM6	TM12
Performance	Winding type				S	S	S
	Motortype, max voltage ph-ph	3-phase synchronous Iron core, 600V _{dc}					
	Ultimate Force @ 10°C/s	magnet @ 25°C	F _u	N	120	240	480
	Peak Force @ 6°C/s	magnet @ 25°C	F _p	N	105	210	420
	Continuous Force*	coils @ 100°C	F _c	N	60	120	240
	Maximum Speed**	@ 600 V	V _{max}	m/s	12	12	12
	Motor Force Constant	coils @ 25°C	K	N/A _{rms}	39	39	39
	Motor Constant	coils @ 25°C	S	N ² /W	95	190	380
Electrical	Ultimate Current	magnet @ 25°C	I _u	A _{rms}	4.1	8.2	16.4
	Peak Current	magnet @ 25°C	I _p	A _{rms}	3.1	6.2	12.4
	Maximum Continuous Current*	coils @ 100°C	I _c	A _{rms}	1.5	3	6
	Back EMF Phase-Phase Peak		B _{emf}	V _{dc} / m/s	32	32	32
	Resistance per Phase	coils @ 25°C ex. cable	R _f	Ω	5.4	2.7	1.35
	Induction per Phase	l < 0.6 Ip	L _f	mH	35	17	9
	Electrical Time Constant	coils @ 25°C	τ _e	ms	6.5	6.5	6.5
Thermal	Maximum Continuous Power Loss	all coils	P _c	W	49	99	197
	Thermal Resistance		R _{th}	°C/W	1.5	0.75	0.38
	Thermal Time Constant	minimum	τ _{th}	s	75	75	75
	Temperature Sensors				PTC 1kΩ and KTY21-6		
Mechanical	Coil Unit Weight	ex. cables	M	kg	0.6	0.9	1.6
	Coil Unit Length	ex. cables	L	mm	93	143	241
	Motor Attraction Force	rms	F _a	N	300	500	900
	Magnet Pitch NN		τ	mm	24	24	24
	Cable Weight		m	gr/m	180	180	180
	Cable Type (Power FLEX)	length 3 m	d	mm (AWG)	9.0 (21)		
	Cable Type (Sensor)	length 3 m	d	mm (AWG)	4.3 (26)		
	Cable Life (Power FLEX)	minimum			5,000,000 cycles		
	Bending Radius Static	minimum			4x cable diameter		
Bending Radius Dynamic	minimum			10x cable diameter			



TM3 on 144mm magnet plate shown

FLEX Cable

The TM series comes standard with a 3m long FLEX power cable.

Magnet plate dimensions

Le (mm)	96	144	384
M5 bolts	4	6	16
Mass (kg/m)	2.1		

Magnet plates can be butted together.

All specifications ±10%

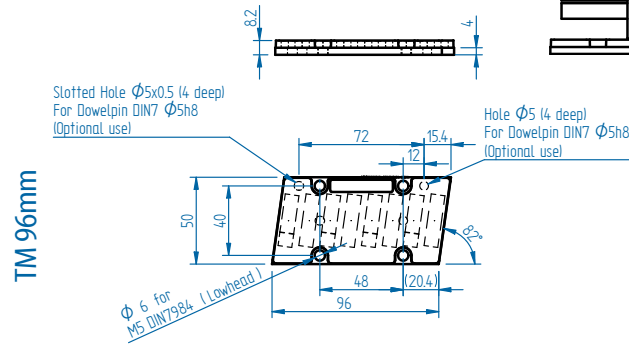
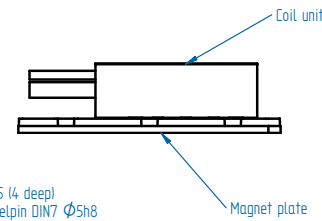
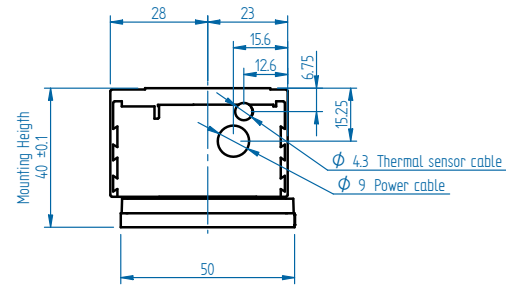
*Max. continuous force depends on the thermal resistance, cooling surface and ambient temperature of your application. Download our simulation tool to check the motor's thermal behavior in the application.

** Actual values depend on bus voltage. Please check the F/V diagram in our simulation tool.

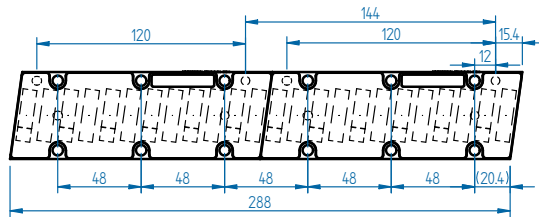
Mounting instructions and flatness or parallelism requirements can be found in the Iron Core installation manual. CAD files and 3D models can be downloaded from our website.

MAGNET PLATES

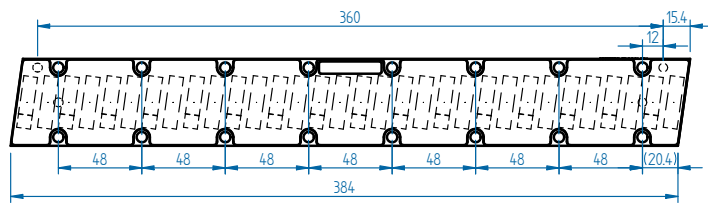
COIL UNITS



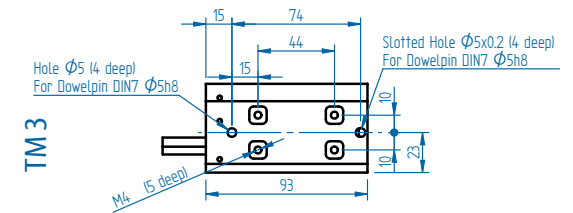
2x TM 144mm



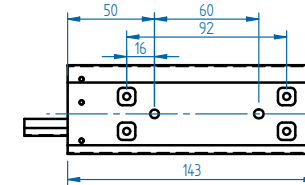
TM 384mm



TM 3



TM 6



TM 12

